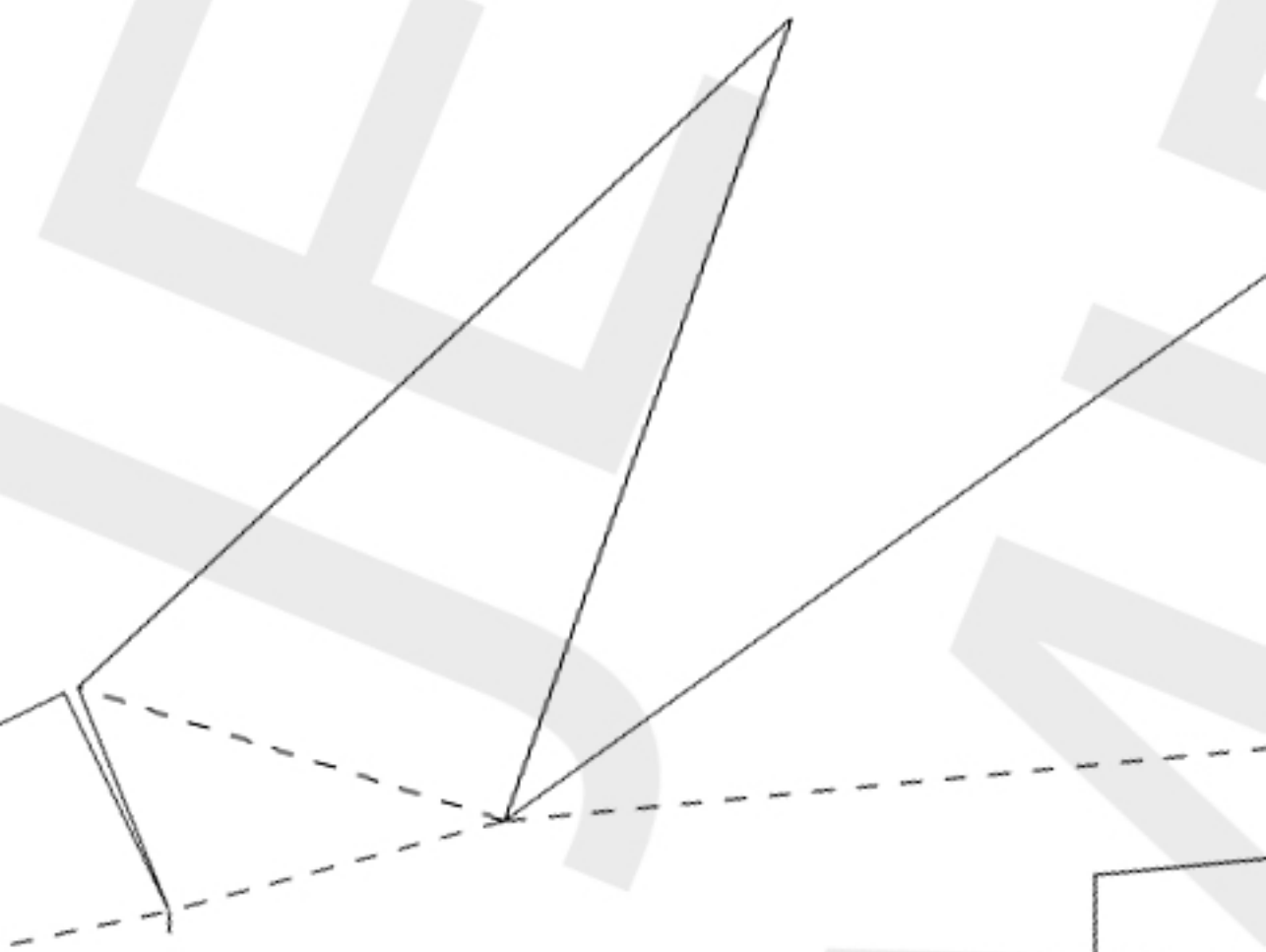


50mmx50mm

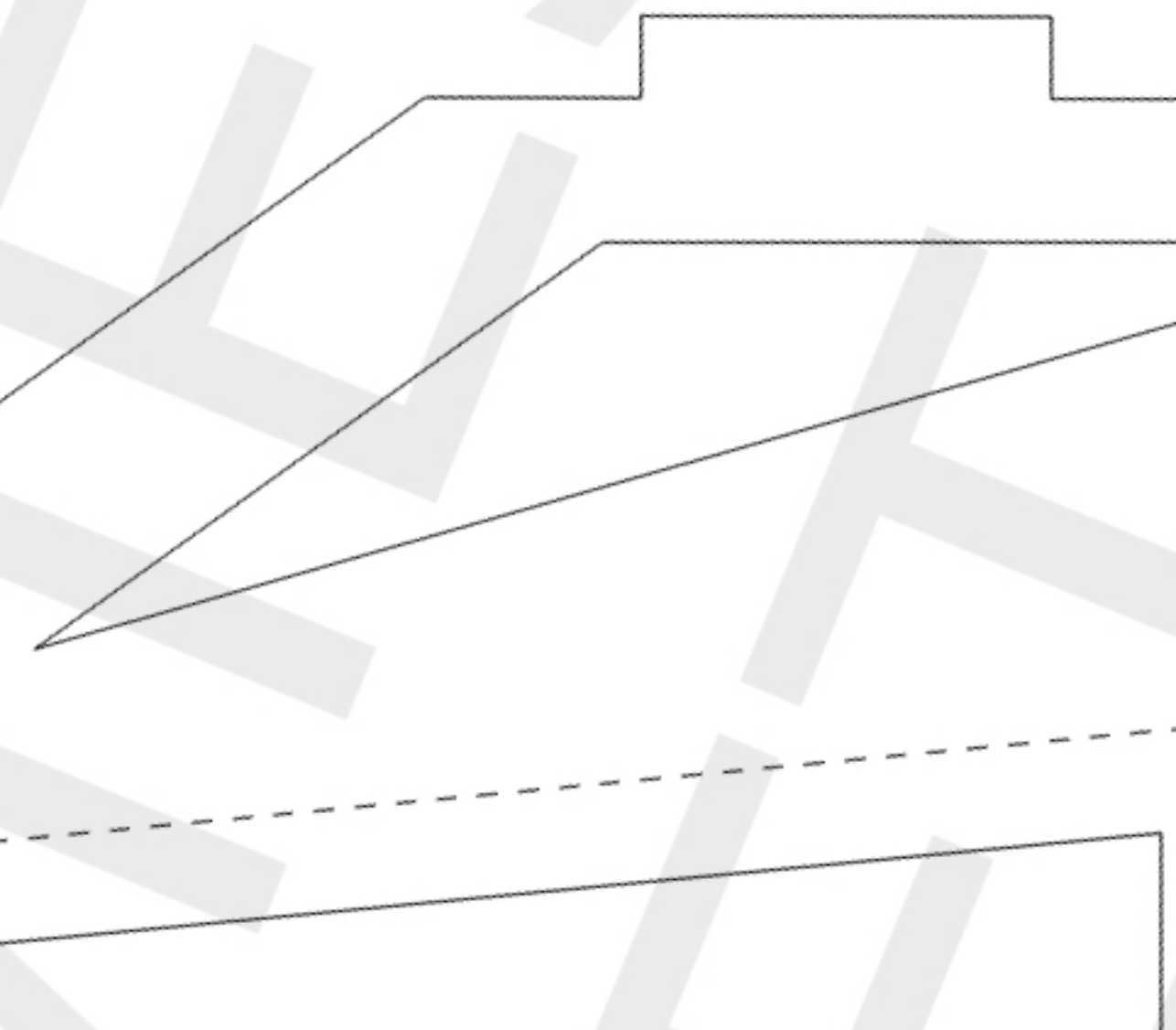


**W**

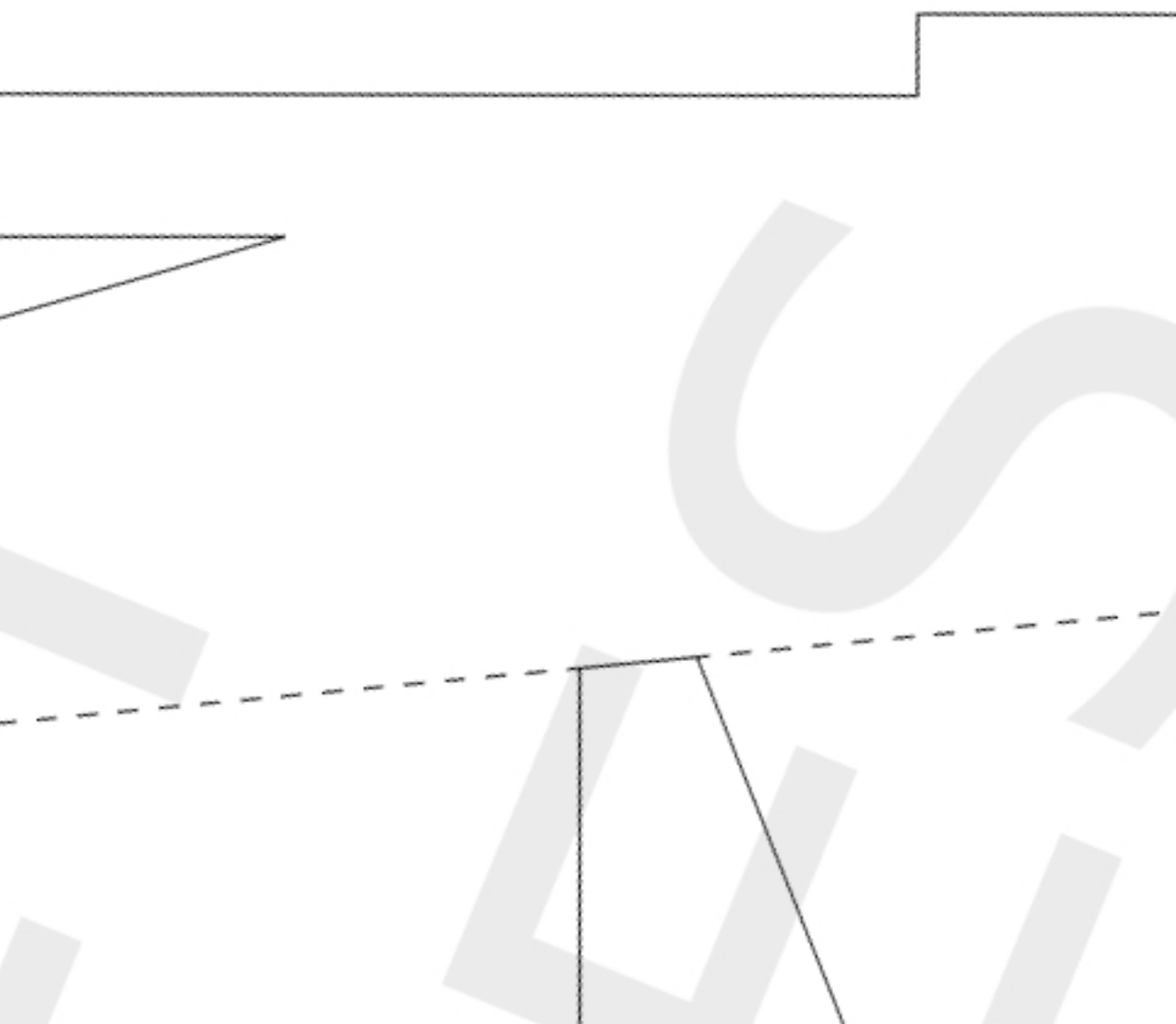
[www.frcfo](http://www.frcfo)

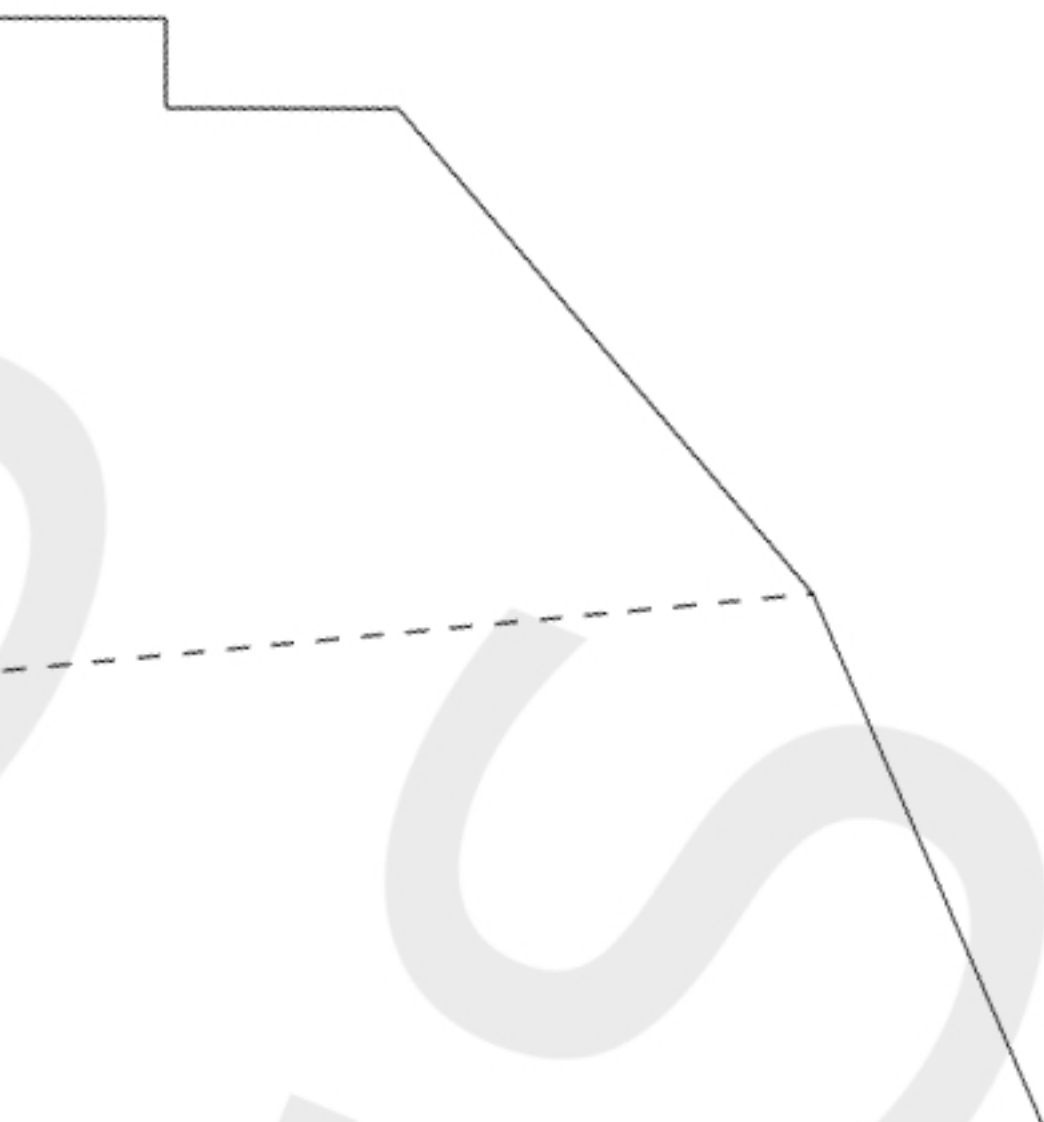


amies.co



om





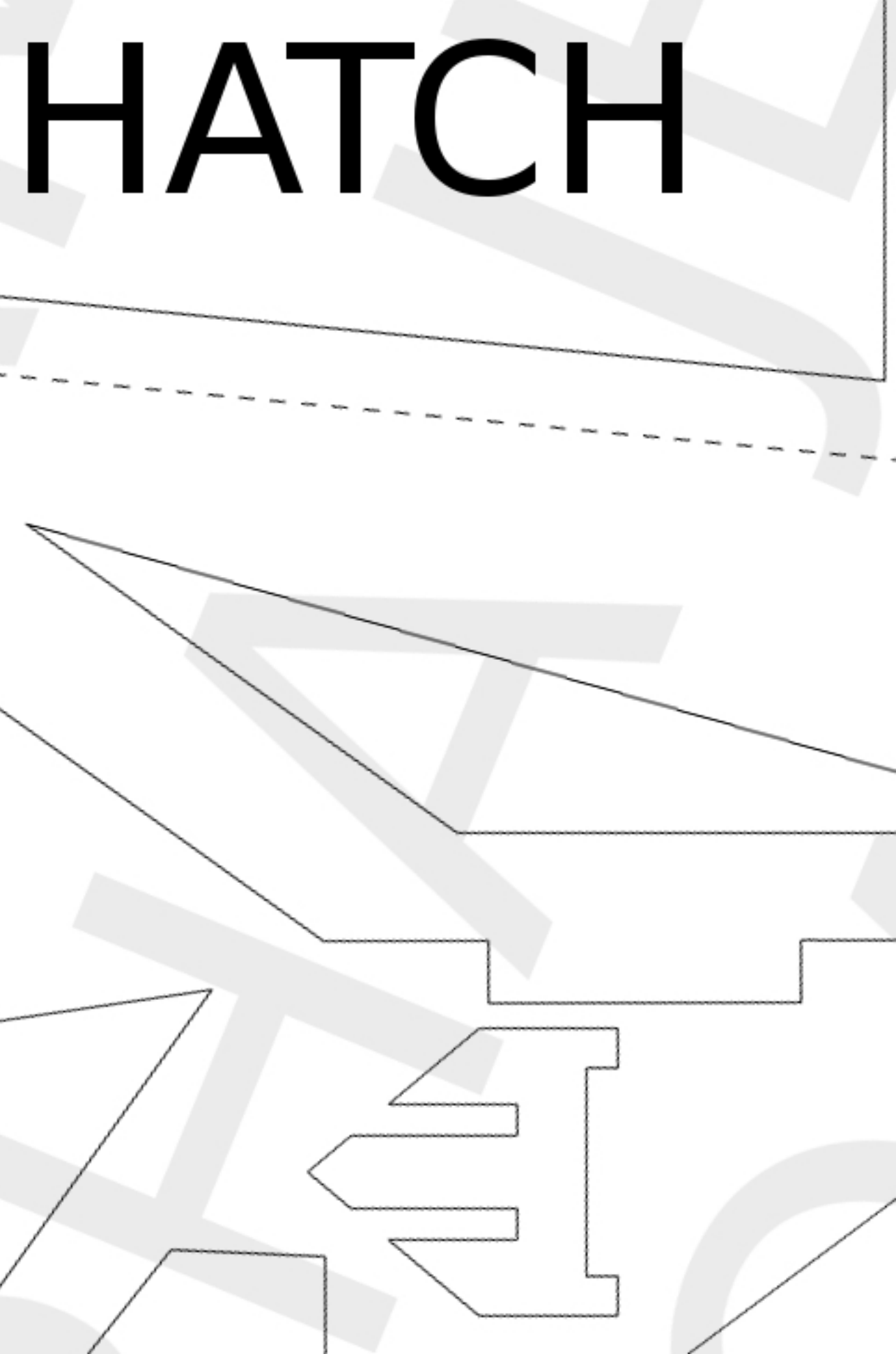
**TOP WIN  
X2**

NG

TOP MO  
MOUN



TOR  
NT



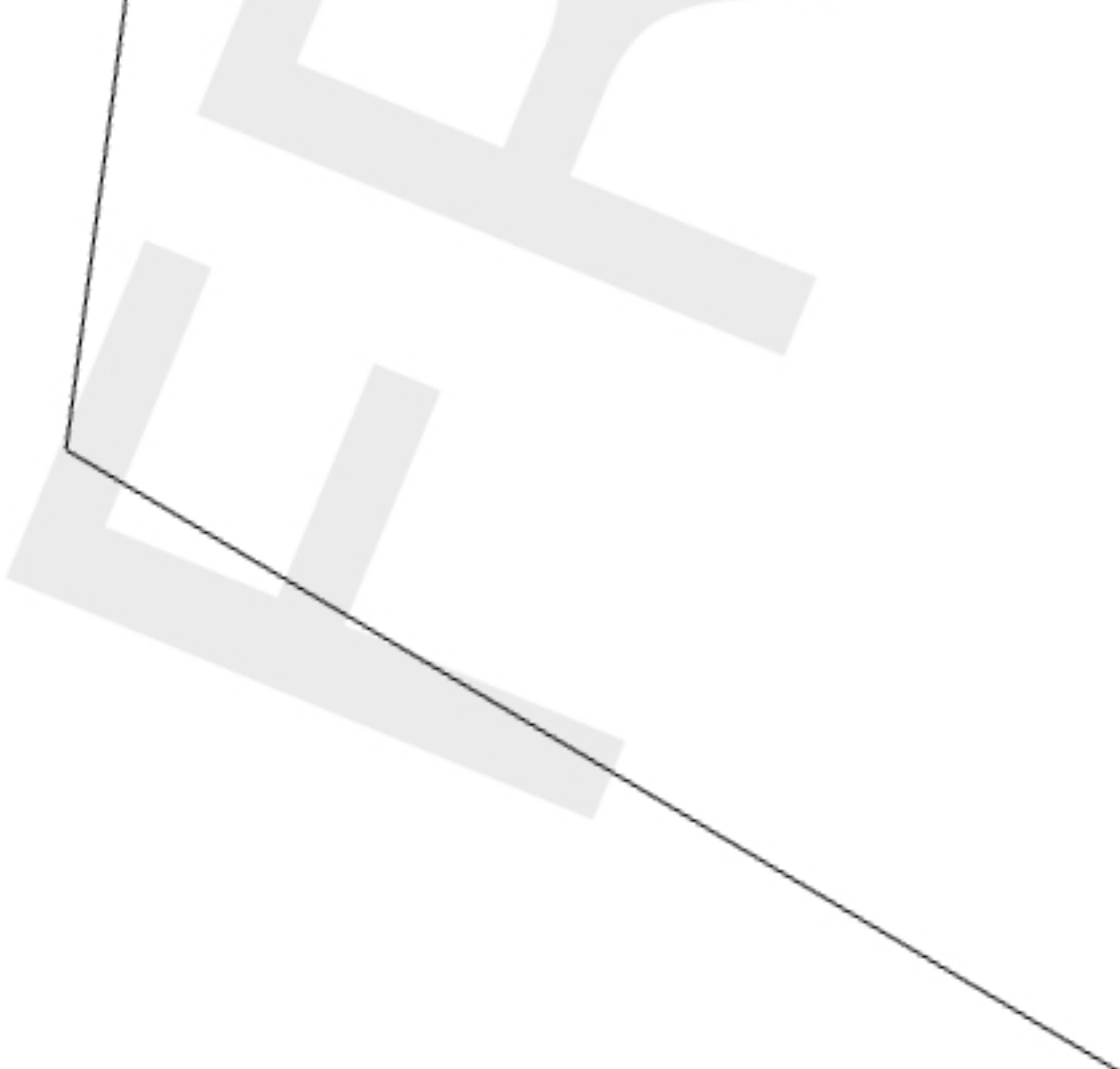
# HATCH




**2200KV BRUSHLESS OUT**  
**6X4E PROP**  
**30A BRUSHLESS ESC**

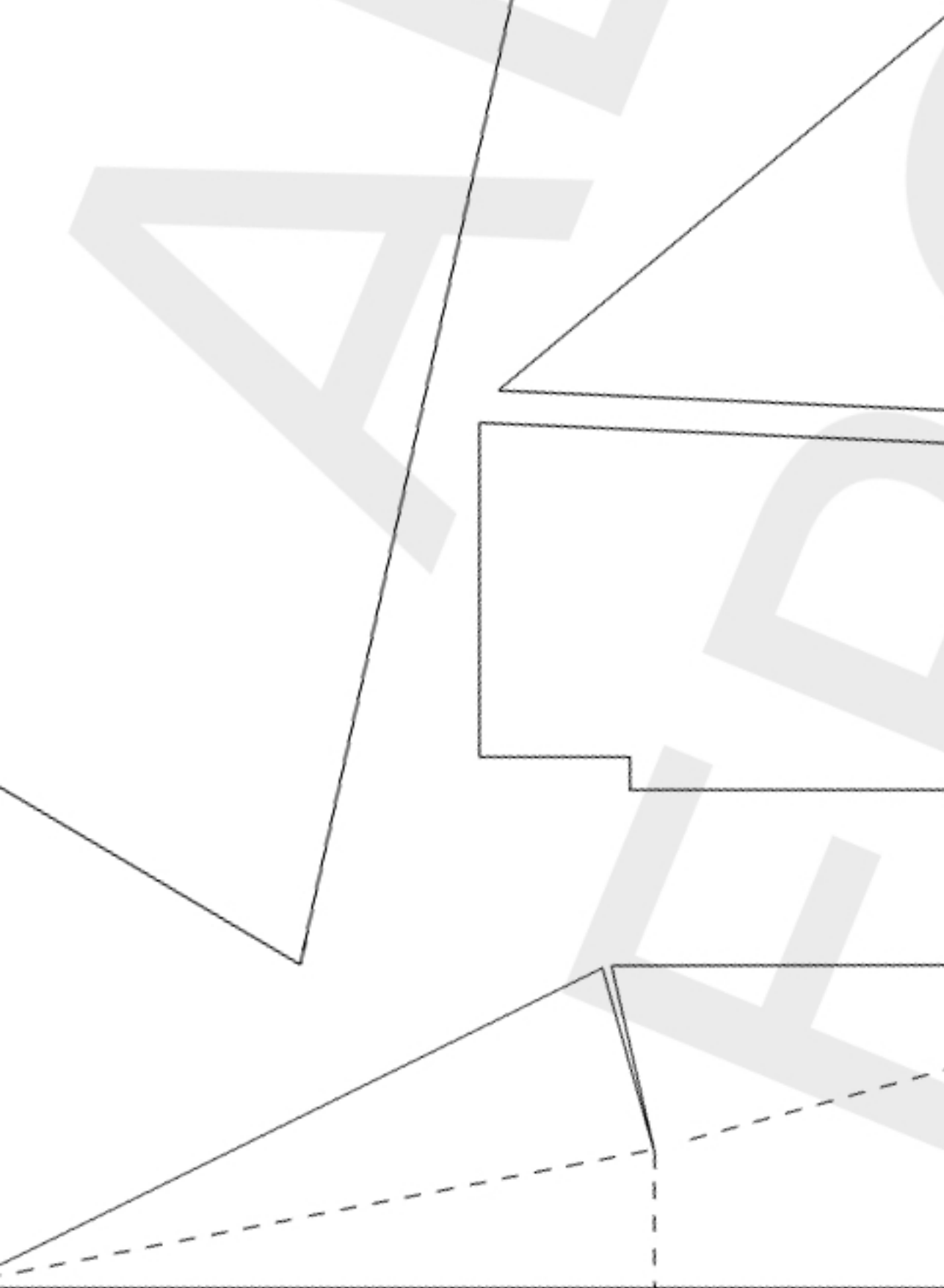


**RUNNER**



DESIGNED AND  
TESTED BY  
JAY ROTHWELL  
GREG STRYSKY  
LAST UPDATE 11/03/2013







PLY  
MOUNT

The image is a technical drawing of a mechanical part. It features a circular feature with a cross-hatch pattern inside, labeled 'PLY MOUNT'. The part has a complex, stepped profile with various lines and a dashed line indicating a hidden edge. The drawing is rendered in a clean, black-and-white style with a light gray background.

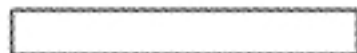
X2



HIGH  
ALPHA  
CG



STOCK  
CG





2X 9G SERVOS

1500MAH - 2200MAH 3S

NO CARBON FIBRE!

SCORE AND FOLD ON DO

WIDTH - 605MM

LENGTH - 850MM

WEIGHT - 15OZ - 20OZ



X2

MAIN WIN

LIPO

TTED LINES

NG